

HATÉMA

THE
RAINFOREST
THICKET *COLLECTION*



100% RECYCLABLE

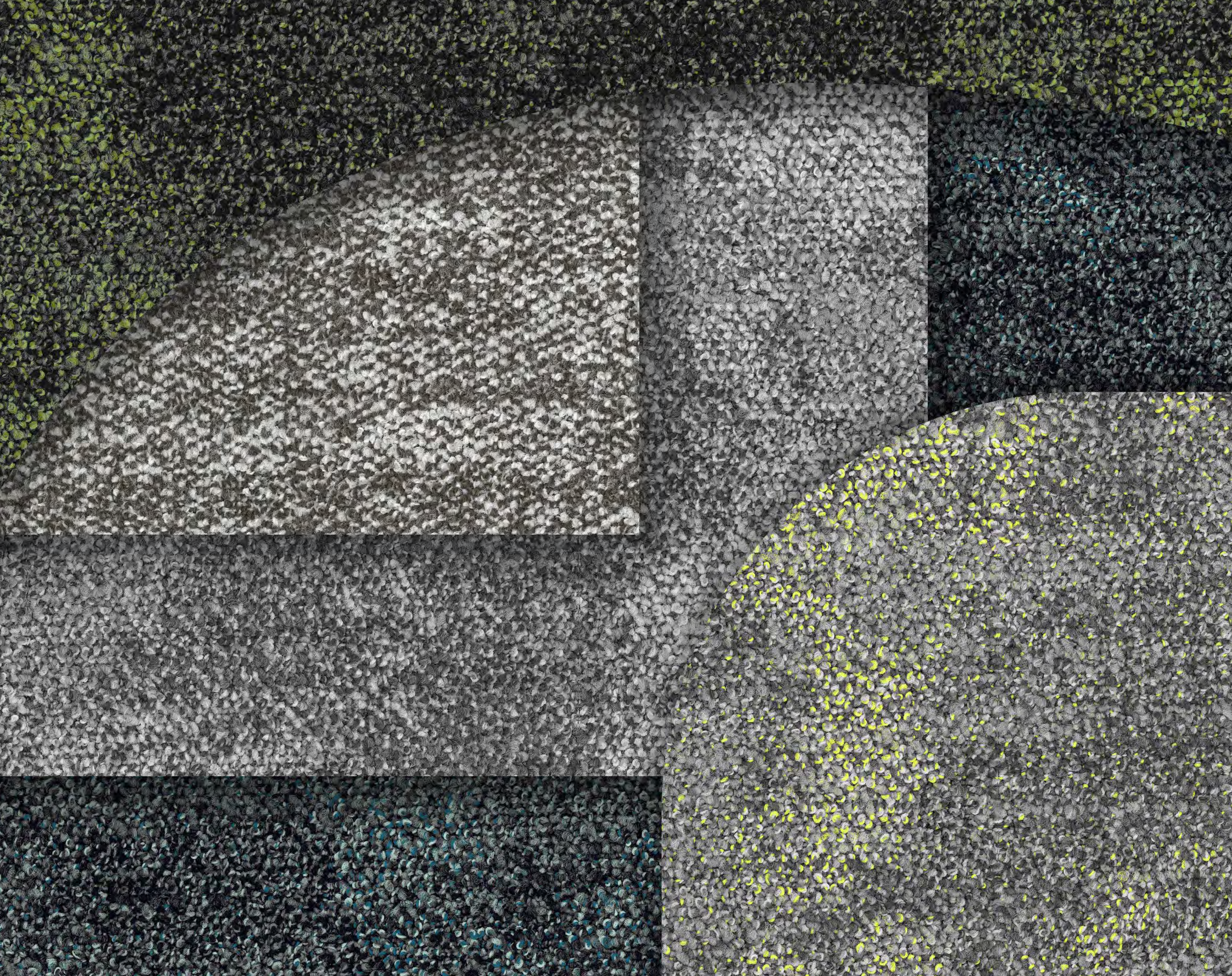
ECONYL[®] yarn can be recycled and reused over and over again.

ECONYL[®] 再生尼龙可以无限次回收、重塑并循环使用。

ANKER 这一系列地毯 100% 采用了意大利 Aquafil 生产的 ECONYL[®] 再生尼龙。

这款纱线 100% 由世界各地回收的废弃渔网、旧地毯、织物废料以及其他尼龙废弃物经化学回收工艺再生而成。

ECONYL[®]





THE
RAINFOREST
THICKET *COLLECTION*

在钢筋水泥的城市中，心灵渴望自然的拥抱：向往那片雨林的清新与生机。
由此，Rainforest·雨林系列应运而生。
设计师通过巧妙设计，为人们架起了通往自然的桥梁。
它让你仿佛置身繁茂的雨林，重新触摸久违的自然，寻回心灵深处的宁静与和谐。

In the concrete jungle, the soul longs for nature's embrace, yearning for the freshness and vitality of the rainforest.
Thus, the Rainforest series was born. Through ingenious design, it serves as a bridge connecting people with nature.
It transports you into a lush rainforest, allowing you to reconnect with nature and rediscover inner peace and harmony.



Click the toggle icon to explore 3 patterns



Pattern

SIZE: 18inch*36inch

THICKET

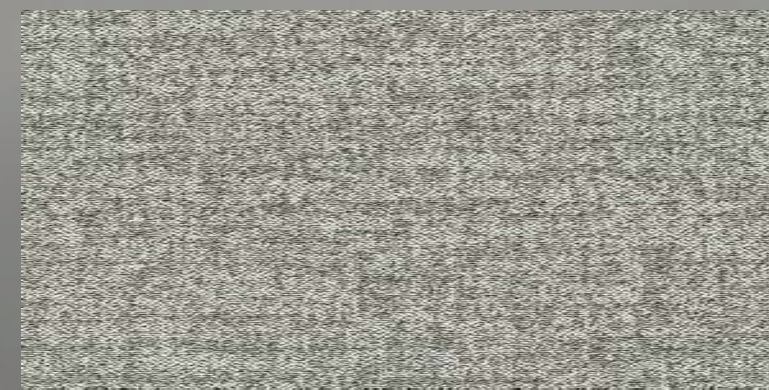
THICKET, inspired by the underbrush of tropical rainforests, features abstract patterns reminiscent of intertwined moss and shrubs. Each inch of weaving reflects the purity and harmony of nature, while the monochromatic design exudes a sense of simple elegance and nobility.

以热带雨林中的灌木丛为灵感，抽象图形宛如苔藓与灌木交织。每一寸的交织都体现出自然的纯净与和谐，单色设计彰显出简约高贵的气质。

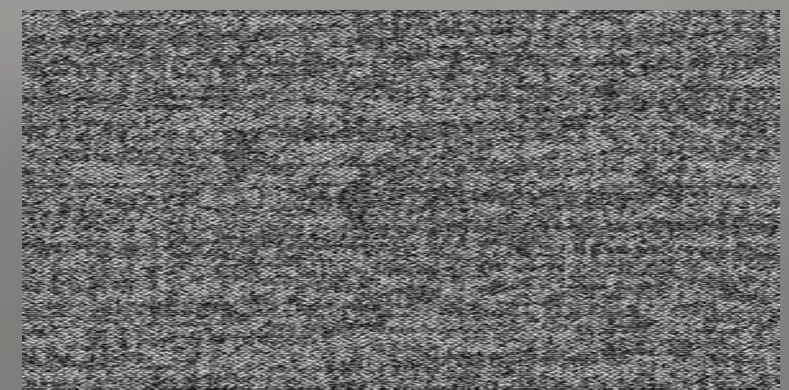


TCT-(05)300868





TCT-(04)300867



TCT-(02)300865

HATÉMI



Pattern

SIZE: 18inch*36inch

RAINFOREST

Delve into the mysterious beauty of the tropical rainforest, Rainforest captures the natural contours like an abstract painting. Whether opting for monochrome or vibrant color series, each carpet is a perfect interpretation of natural inspiration.

深入自然的神秘之美，RAINFOREST 同一幅抽象画，捕捉了雨林的天然轮廓。无论选择单色还是丰富的彩色系列，每一款地毯都是对自然灵感的完美诠释。



RFS-(01)300579



RFS-(02)300580

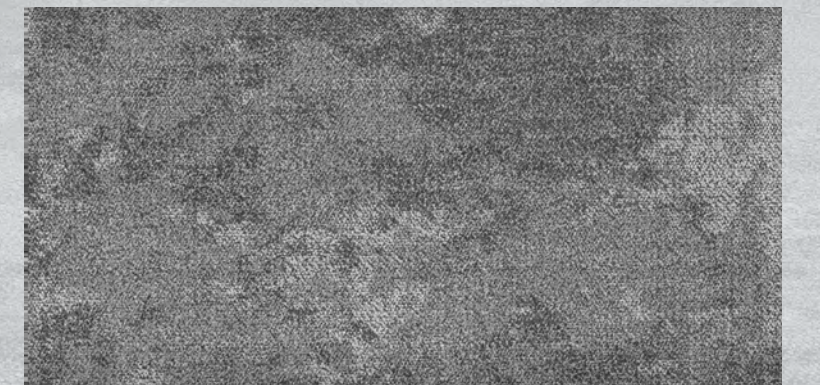


UNPREDICTABLE NATURE



COOL COLOR

WARM COLOR

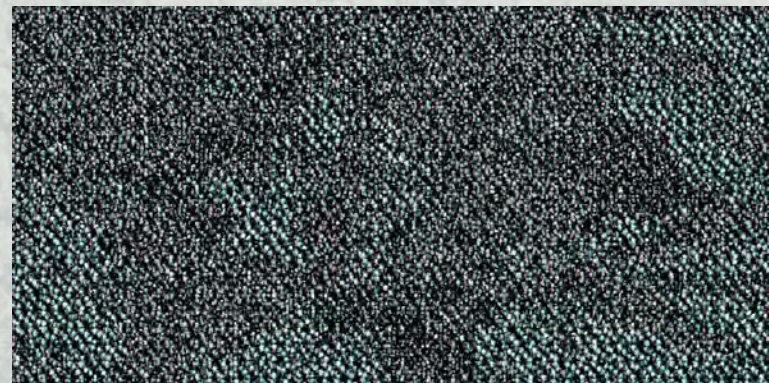


RFS-(05)300583





RFS-(31)300588



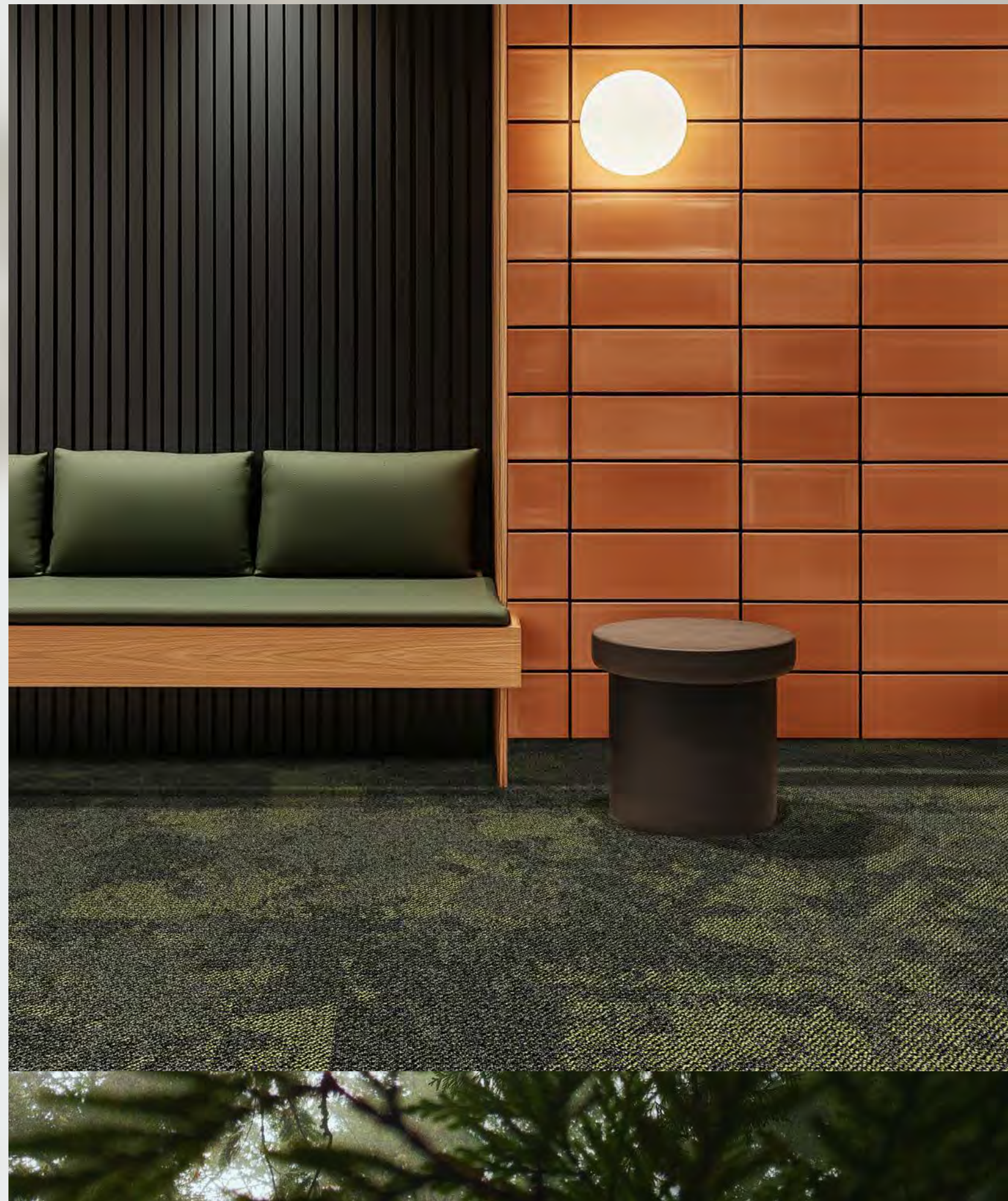


RFS-(32)300589



RFS-(21)300586





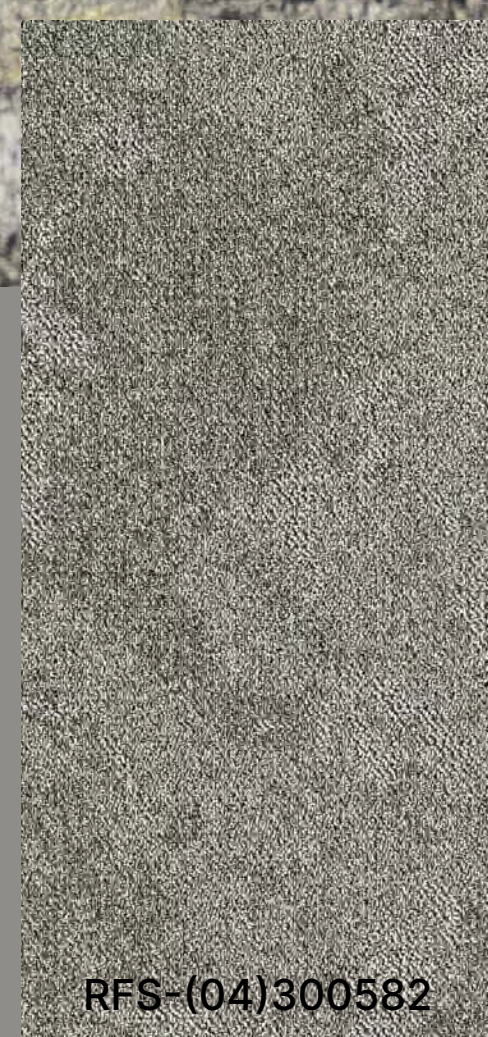
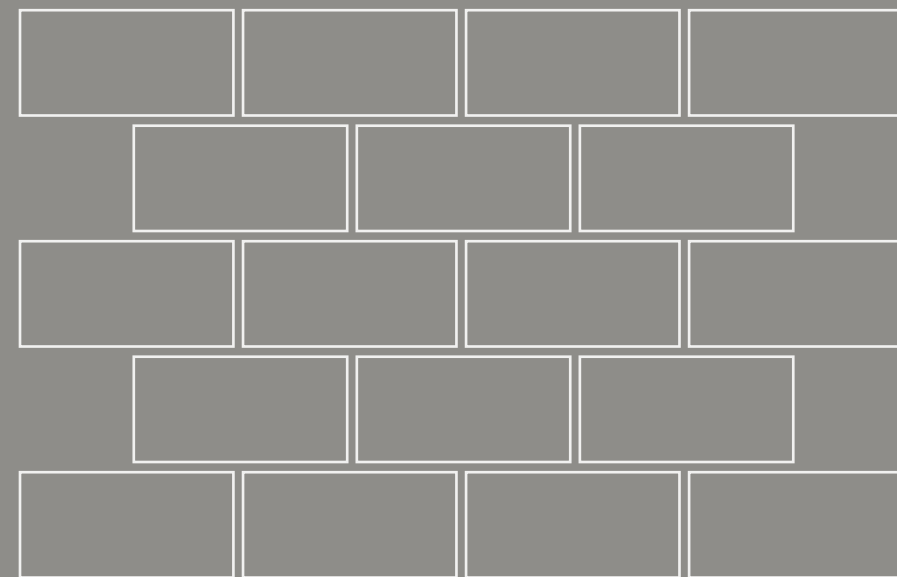
RFS-(61)300600



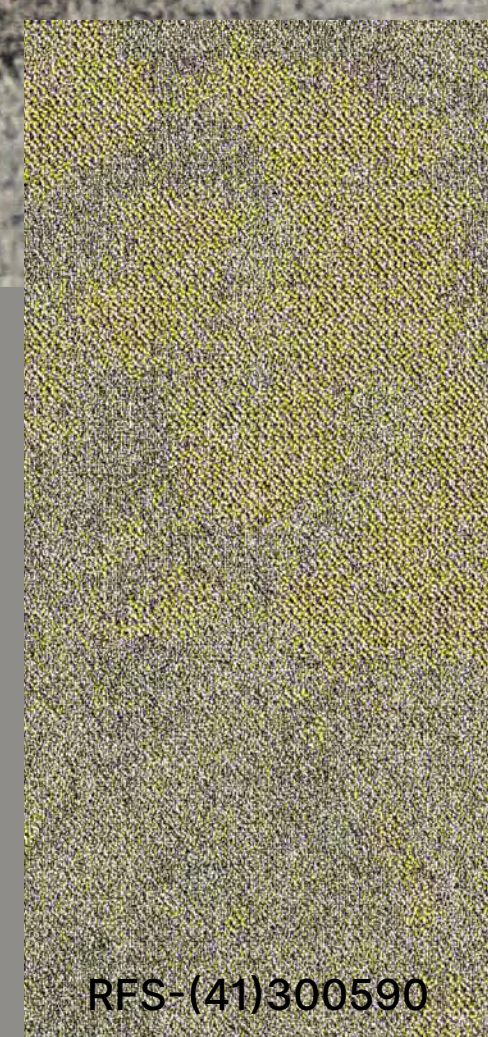




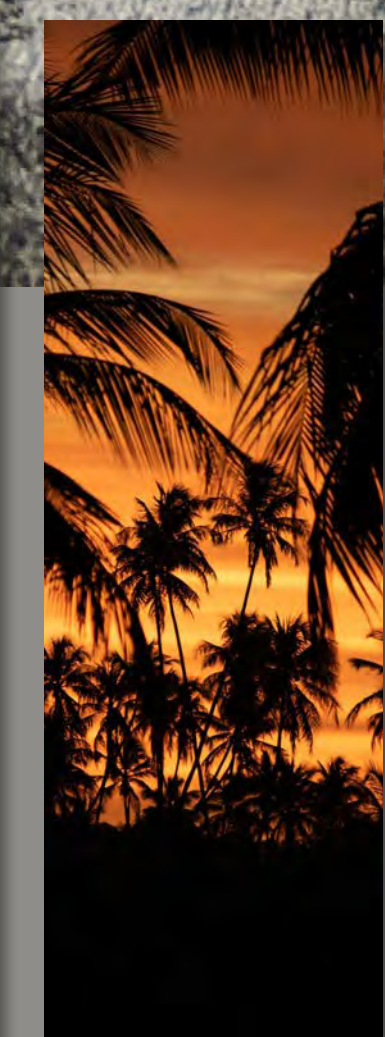
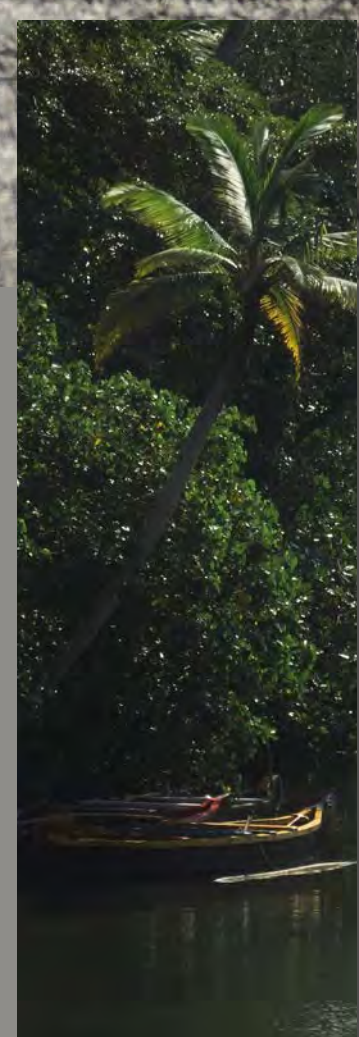
RFS-(62)300610

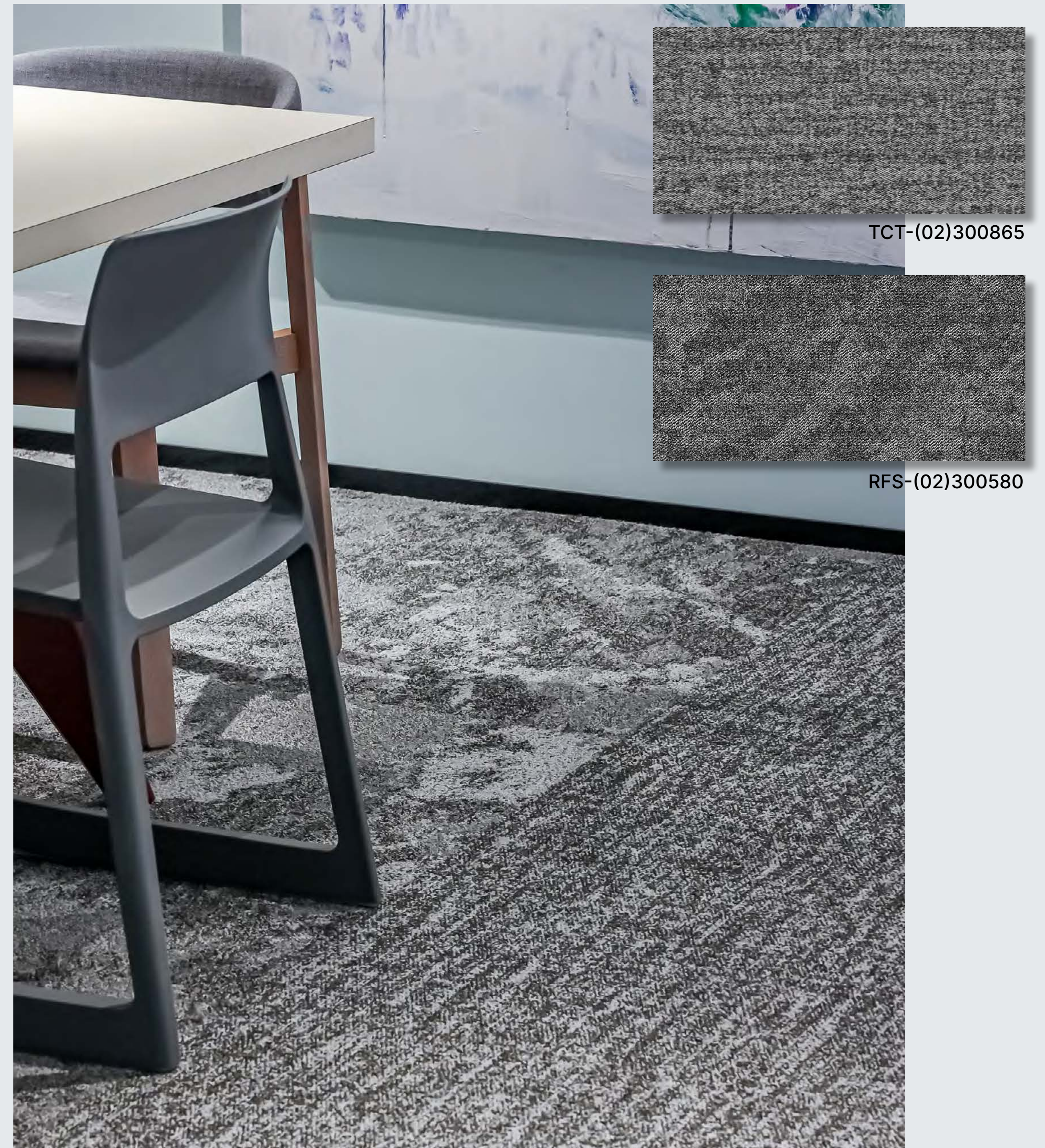


RFS-(04)300582



RFS-(41)300590





TCT-(02)300865

RFS-(02)300580

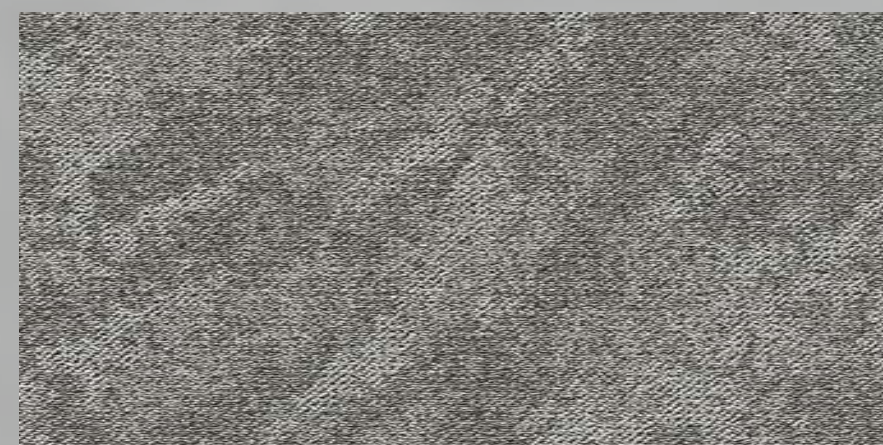


TCT (05)300868

RFS-(05)300583



TCT-(05)300868



RFS-(05)300583





RFS-(62)300610

TCT-(06)300869



RFS-(21)300586

TCT-(01)300864

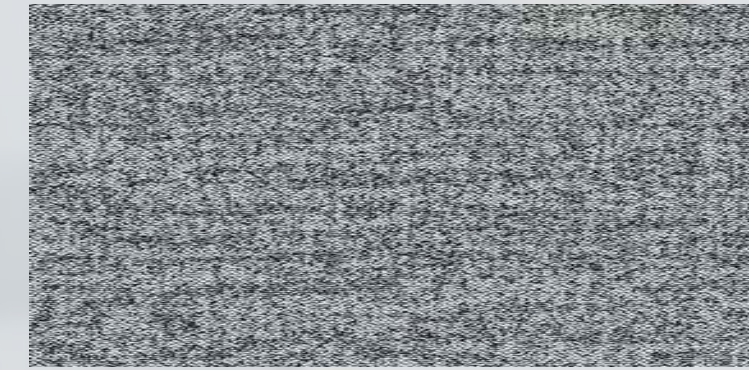


RFS-(21)300586

TCT-(01)300864



TCT-(01)300864

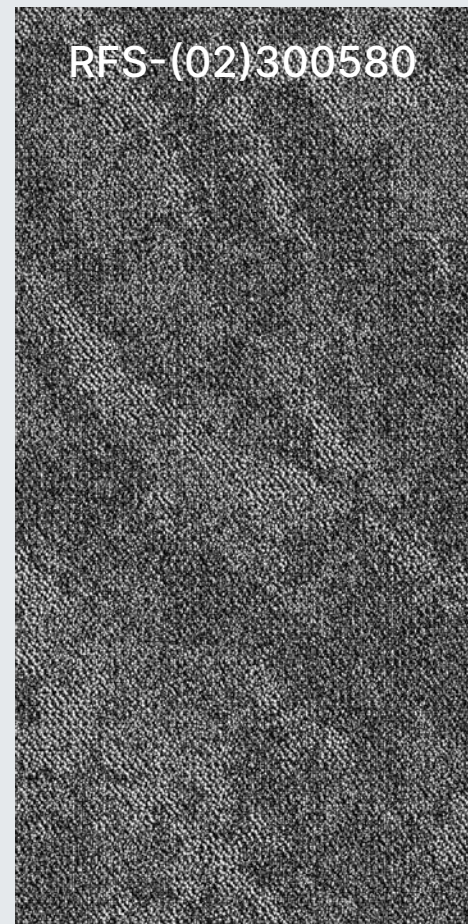


RFS-(21)300586




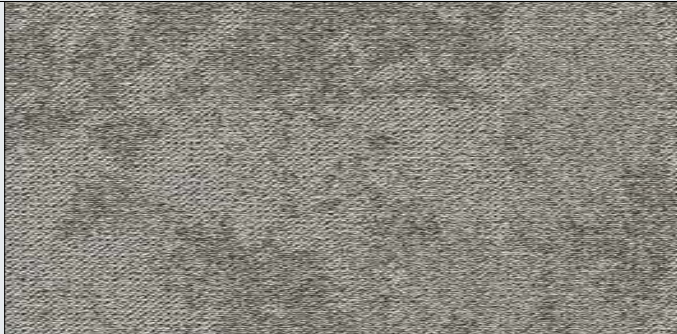


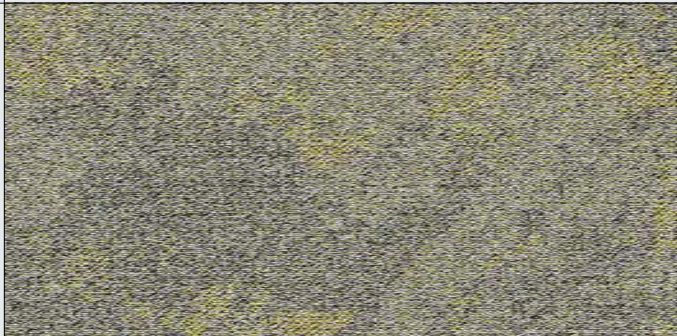


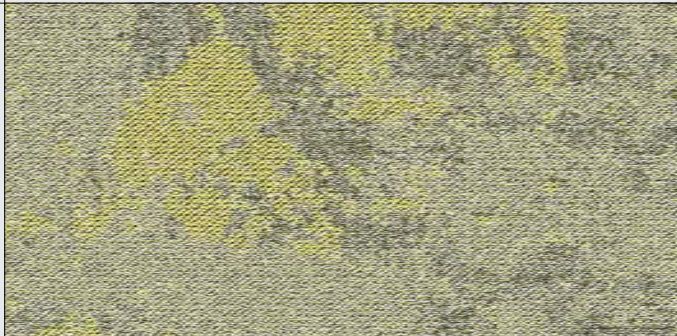





RFS-(31)300588



RFS-(02)300580



THICKET						
	TCT-(01)300864	TCT-(02)300865	TCT-(03)300866	TCT-(04)300867	TCT-(05)300868	TCT-(06)300869

RAINFOREST						
	RFS-(01)300579	RFS-(02)300580	RFS-(03)300581	RFS-(04)300582	RFS-(05)300583	RFS-(06)300584
素色 MONOCHROME						
	RFS-(11)300585	RFS-(21)300586	RFS-(31)300588	RFS-(41)300590	RFS-(51)300599	RFS-(61)300600
彩色 ACCENT						
		RFS-(22)300587	RFS-(32)300589			RFS-(62)300610



ANKER
 Gebr. Schoeller GmbH + Co. KG
 Zollhausstraße 112
 52353 Düren, Germany
 Telefon+49(0)2421 804-0
 Fax+49(0)2421 804-200

 anker@anker-dueren.de
 www.anker-carpets.com



Since **1854** always one
#innovation **AHEAD**

SPECIFICATION

Product Name	Thicket	Rainforest
Manufacturing Process	Tufted	Tufted
Face Fiber	ECONYL® Regenerated Nylon	ECONYL® Regenerated Nylon
Construction	High Low Loop & Tip Shear	High Low Loop
Primary Backing Cloth	Polyester Spunbond Fabric	Polyester Spunbond Fabric
Tile Size	18inch * 36inch	18inch * 36inch
Backing	Unit Back®	Unit Back®

We reserve the right to make technical changes while maintaining the service properties of the carpet. The goods delivered may have a slight deviation in colour from the colour samples.



...and simply everywhere.